

Fitting your Single Pleated Screen, face fit – Kit PL7**

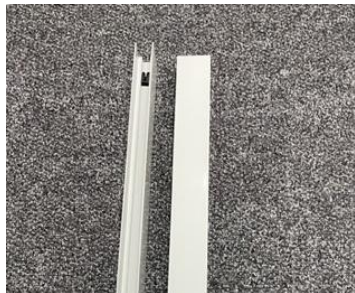
Thanks for choosing our screen system.

We double check all orders before despatch but we would ask you to check that you have all the components as per the following contents list below.

If any items are missing please call us on 01628 48 19 19

Contents

Top and bottom tracks (40 mm) both containing a V shape black cursor



2 Side Channels



Corners for the track assembly



Silver Closing Carrier with magnetic strip insert



Mesh with handle bar attached



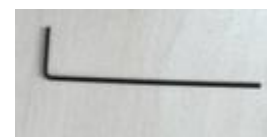
Framework fixing screws



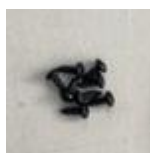
Cover caps for screw holes



Allen Key



Black tensioner screws



Cover cap for bolt insertion hole



2 D Handles and fixing screws



Handle fixing pads



Screw driver (for screens over 1300mm width)



Windproof Clips (for screens over 1300mm width)



Windproof Sliders (for screens over 1300mm width)



Tools required

- Tape measure & pencil
- Mallet or hammer
- Spirit level
- Power drill
- 3 ½ mm drill bit – suitable for drilling aluminium
- 8mm drill bit – suitable for drilling aluminium
- Posidrive 2 bit
- Allen key 2.5mm (**provided**)
- Pair of scissors

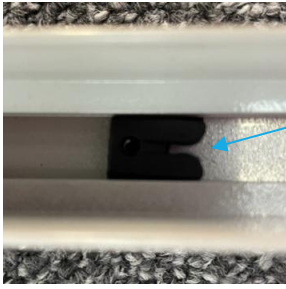
Overview

Your screen system consists of 1 pleated mesh screen door within a surrounding framework which face fits to the door frame. The pleated mesh door pulls across your door opening and closes on to a magnetic strip on the opposing side.

The screen must be fitted square to ensure it functions correctly. Check at intervals using a spirit level

Step 1 – Drill and assemble the outer frame.

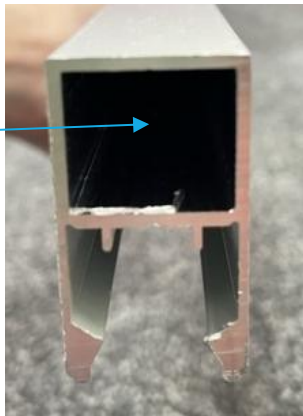
- Identify the top and bottom tracks by finding the lengths that contain the black cursors. The V of the cursor must face the side of the screen that you are closing to, e.g. if you are pulling the screen from left to right to cover your door opening, the V on the cursor must face the right-hand side of the frame. See image on next page. Bear this in mind when you drill the holes on the front face of the top track.



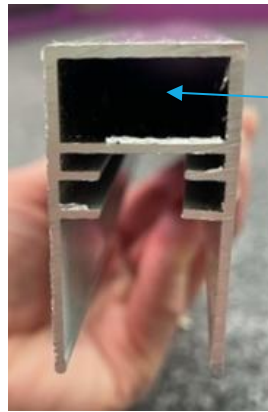
V must face the side that the screen will close to.

- The Top and bottom track and the 2 side channels have a chamber running around the edge of the framework to allow you to drill through without damaging the workings of the screen. See image below.

Side Channels Chamber drill holes through this face



Top and bottom track chamber. Drill holes through this face

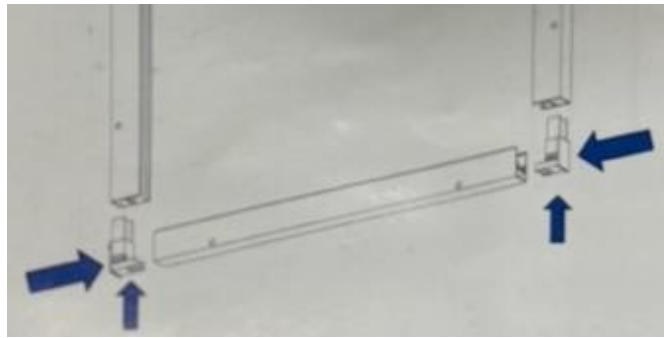


- At approx. 100mm in from either end, of all 4 lengths, drill all the way through the 40mm face of the profiles, front to back using a 3 1/2mm drill bit.
- Now increase the size of the hole on the front face only by using an 8mm drill bit. At this point make sure your top and bottom track is the correct way around for the larger holes to be facing outwards and the V's are facing the right direction.
- Take the top and bottom track and 2 side channels and assemble the framework of the screen by using the 4 corners provided. Ensure all of your enlarged holes are on the same face. The corners will be a snug fit and you will require a mallet or hammer to tap them into place.

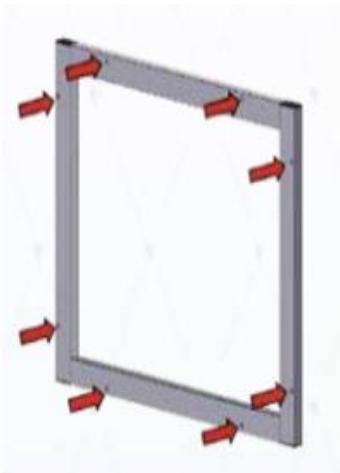
Top



Bottom



Step 2 – Fit the outer frame.



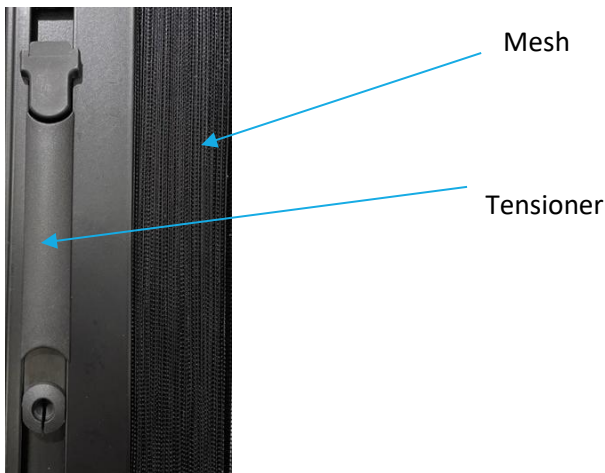
- Offer the assembled framework up to your door frame and position for fitting. Once you are happy with the position of the frame, screw it into place.

Tip: You can use some double-sided bonding tape to the back of the screen to hold it in position whilst fixing into place

Step 3 – Fitting the Mesh



- Take the cling film off the mesh and remove the cardboard from around the strings.
- Ensure the strings are exiting the unit without being caught in the end cap at the top and the bottom.
- There is a tensioner on the top and the bottom of the mesh, see image below. These should face you as you fit the screen.
- The silver edge of the mesh fits into the side channel. Whether you are fitting to the left or right-hand side, position the mesh with the silver part facing the side channel. Lift it up into the top track holding the strings towards the opposite side of the screen. Lower until it sits in the bottom track with the strings coming from under the mesh towards the opposite side of the screen.
- Position the mesh up against the side channel. **Starting from the bottom** gently pull the mesh away from the silver metal element and push the unit into the channel. As you move upwards you will start to hear it clip into position*



Step 5 – Fitting the strings

- Check that the strings are running freely both to the top and bottom of the mesh by holding each of the group of strings in turn in one hand and pull the handle bar slightly toward the opposite side. The strings will move if they are free. Push the mesh back to the side. If the mesh does not move freely you can ease the handle bar out of the tracks to check the top and bottom 'end plugs' to make sure the strings are not trapped.
- Take the knot on the string at the top of the mesh and hook it into the V of the black adjuster. The strings should feel under tension. See image on next page.
- This process can be a little fiddly and it may help to have a second pair of hands with a torch to shine into the track or, if you have one, use a head torch.
- Repeat the process for the bottom strings.
- Leave the strings long at this point.



Step 6 – Fitting the magnetic closing strip

- Check the polarity of the magnetic strip by holding the dark grey side up against the magnetic strip of the handle bar. If there is no magnetic 'pull' turn the strip upside down.
- The magnetic strip is shorter than the height of your screen. With the polarity now established and with the silver edge facing the side channel, lift the strip into the bottom channel and let it rest on the bottom track, now just as you did with the mesh, begin at the bottom and start to push the strip into the side channel . As you work upwards you will start to hear it clip into place.



Step 7 -Testing your screen



- Pull the handle bar on the mesh over to the other side to check it runs smoothly and meets with the magnetic strip. If this is not the case the strings may need some adjustment. We would suggest making an adjustment to the top string first and then test to see if that corrects the issue. If not, you may need to make further adjustment to the same string or, to the bottom string. Make incremental adjustments until the issue is fixed.
- To adjust use the allen key to loosen the black adjuster and slide it along the track.

Step 7 - Finishing touches!

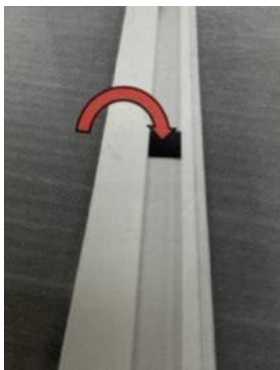
Once you are happy that the screen is running smoothly and meeting the magnetic strip on the opposing side you can complete the finishing touches to the screen.

- Cut the top and bottom strings using a pair of scissors leave them long enough that they are just hidden by the tracks.
- Cover the holes in the outer framework with the cover caps provided.
- Push the tensioners on the handle bar upwards / downwards so that the glider sits on the track. Screw the black tensioner screws into the hole at the bottom / top to hold them in place.

Step 8 – Attaching the handles

The handle bar has a groove running down its length which naturally acts as a handle and gives a minimalistic look to the screen, but there are also 2 black D shaped handles included with your system. If you wish to attach these please find instructions below.

- Place the handle fixing pad into the groove within the handle bar at the position you would like to fit the handle (usually in the middle of the height to ensure the screen is pulled across evenly)



- Place the handle on to the handle bar with the rounded edge of the D facing the side of the screen with the mesh and the middle screw hole over the fixing pad.

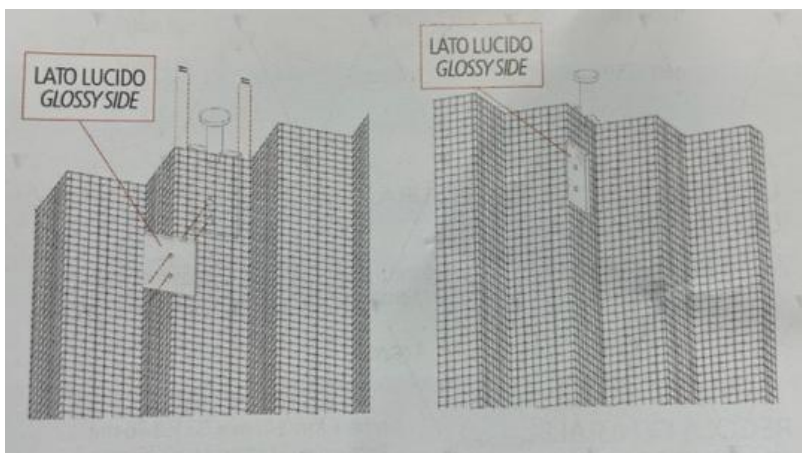


- Push the top and bottom ends of the handle into the groove on the handle bar and then screw the handle to the pad with the black screws provided, see images above. Do not overtighten the screw.

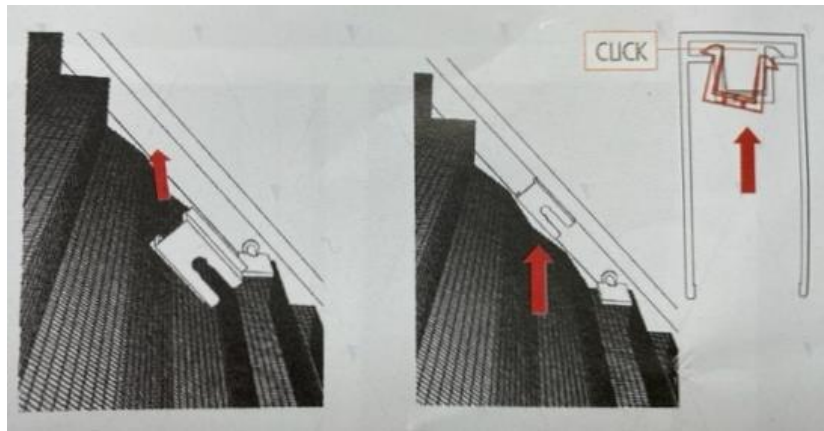
Step 9 – Windproof clips

In the vast majority of installations these are not required so you may wish to start using the screen and see if you need to fit them, however, if you are in a particularly exposed location you may wish to fit from the start.

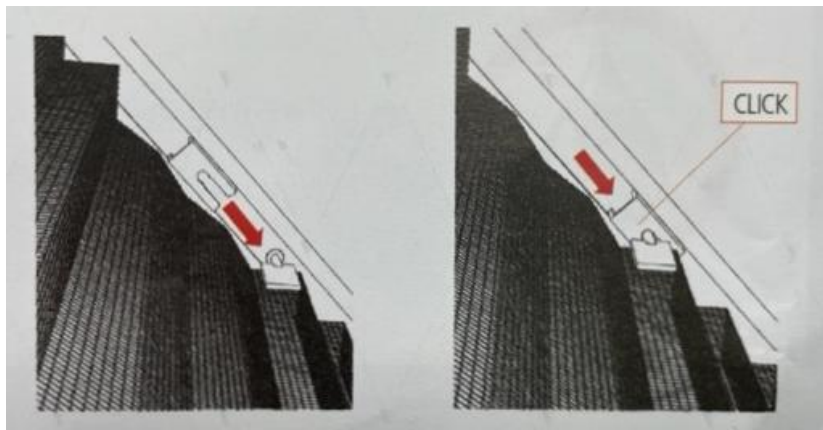
- Position the clips evenly across the top of the mesh starting at least 20cm from either end.
- Close the screen and push the mesh gently out of the top track where you wish to position a clip.
- On one of the mesh folds position the clip with the prong protruding above the top of the mesh and clip the back plate in place on the other side of the mesh. The shiny side of the back plate should face away from the mesh. See drawings below.



- Before you replace the mesh insert the slider into the top track. You can use the screw driver to assist with positioning the insert. See drawings below



- Push the mesh back into the top track and slide the protrusion on the clip into the slider until it clicks. See images below.



Step 10 – Additional information

- *If you need to remove the mesh from the side channel there is a hole within the mesh where you can insert a bolt (see image on next page). The action of screwing in the bolt pushes the mesh out to a position where you can pull it out. This hole can be covered with the cover cap provided. If you require a bolt to do this please contact us.



- Once you have finished your installation you can spray the top and bottom track with silicone which will assist with the smooth gliding movement of the screen.
- Keep the bottom track free of debris by hoovering on a regular basis using the round furniture attachment and wipe with a damp cloth. This will ensure the continued smooth running of your screen.
- The mesh can also be brushed or hoovered using the round furniture attachment. It is recommended that you gather the mesh together slightly whilst doing this.

YOUR INSTALLATION IS COMPLETE